

---

# SUPERIOR FENCING ACCESSORIES

---

PRODUCT CATALOGUE

---



# FENCEMATE®

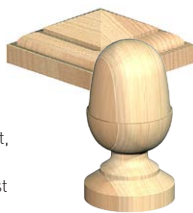
SUPERIOR FENCING ACCESSORIES

## Discover our huge range of post supports, fencing and decking accessories!



### POST SUPPORT SYSTEMS:

Fencemate post support systems are designed to help put up timber fencing, decking, carports and other DIY projects with ease! We offer the largest range of sizes and finishes in any post support range on the market, along with superior quality clamping systems and tougher finishing for rust protection.



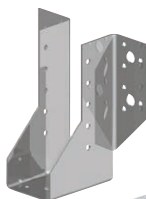
### POST CAPS AND FINIALS:

Add a classy touch to your fences by simply adding finials! Post caps and finials are new to our Fencemate range. These are high quality machine finished products made from slow Eastern European timber. We stock a large range of these: untreated or treated timber, finials and post caps for 2" to 6" posts.



### ROPE AND ACCESSORIES:

Our unique range of decorative rope and rope fittings is also new to our Fencemate range! We offer an extensive range of rope, rope posts and many fittings to suit. All our rope fittings are solid brass, making them superior to other brands. Add some exclusivity to your property by adding a stylish rope fence!



### DECKING ACCESSORIES:

Throughout this brochure you will see our large range of decking accessories. From decking spindles to decking clips our quality products will last you longer every time



**EVERYTHING  
YOU NEED  
IN ONE PACK!**

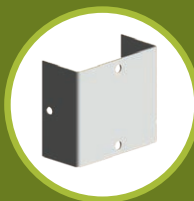
All our Epoxy Brown post supports have a zinc phosphate coating, making them tougher against corrosion.



POST  
CONCRETE  
P6



POST SUPPORT  
SYSTEMS  
P7



METAL  
BRACKETS  
P12



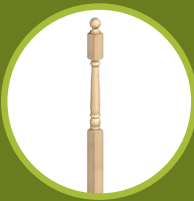
DECORATIVE  
ROPE AND  
FITTINGS  
P14



POST CAPS AND  
FINIALS  
P18



MODULAR  
STEEL RAILING  
SYSTEM  
P22



DECKING  
ACCESSORIES  
P26

# FENCEMATE®

SUPERIOR FENCING ACCESSORIES

P12



Panel Clip

P11



Holdfast™  
Post Extender

P12



Trellis Clip

P07



Swift Clamp™  
Drive In Post Support

P11



Post Extender

P15



Rope Post

P09



Swift Clamp™  
Repair Spur

P10



Fence Pin

# Fencing



P13



Gravel Board Bracket

P13



Panel Security Bracket

P19



Finial

P18



Post Cap

P14



Rope Fittings

P16



Rope

P08



Swift Clamp™  
Flush Bolt-Down

P09



Swift Clamp™  
Concrete In  
Post Support

## Post Concrete

**NEW  
EASY POUR  
BAG!**



### RAPID SET POST CONCRETE

**New improved formula!** The Fencemate rapid set post concrete is two-step fast setting concrete, ideal for quick and easy erection of fence posts. Simply add to water and the rapid-set formula sets within 5-10 minutes! Shower proof, brick-shape bag for neat and easy pallet stacking.

Special prices available for multiple pallet quantities; please enquire for more information.

Order by 12pm for next day delivery!

**NEW** Easy pour bag - less waste, less mess!

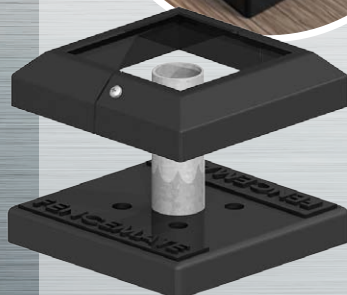
- 60 bags per pallet, stacked neatly and safely
- Shower proof bag
- Recyclable packaging

**SIZE**

**CODE**

**BEST SELLER** 20kg brick bag

279 1000



**CHECK OUT  
OUR UNIQUE  
BOLT-DOWN  
BASE FOR  
WOODEN  
POSTS!**

See page 26

**NEW**



## Post Support Systems

### SWIFT CLAMP™ AND HOLD FAST™ DRIVE IN POST SUPPORT

All items in the Fencemate Post Support range can be ordered along with your normal Ironmongery order.

These supports are suitable for most ground conditions and the wide range of sizes fits all common timber posts. Robust construction ensures they will drive into very hard ground with ease and the effective clamp system holds the post securely in the socket.

Suitable for fence posts, decking, pergolas, gazebos, carports, bird tables and much more.

#### SWIFT CLAMP™ DRIVE IN POST SUPPORT

POST SIZE ins (mm)	LENGTH	FINISH	QTY/BOX	CODE
2 x 2 (50x50)	18 (450)	Epoxy Brown	10	260 0503
2½ x 2½ (70x70)	24 (600)	Epoxy Brown	10	260 0703
3 x 3 (75x75)	24 (600)	Epoxy Brown	10	260 0753
3 x 3 (75x75)	30 (750)	Epoxy Brown	10	260 1753
3½ x 3½ (90x90)	24 (600)	Epoxy Brown	8	260 0903
4 x 4 (100x100)	30 (750)	Epoxy Brown	8	260 1003
2 x 2 (50x50)	18 (450)	Galvanised	10	260 0501
2½ x 2½ (70x70)	24 (600)	Galvanised	10	260 0701
3 x 3 (75x75)	24 (600)	Galvanised	10	260 0751
3 xV3 (75x75)	30 (750)	Galvanised	10	260 1751
3½ x 3½ (90x90)	24 (600)	Galvanised	8	260 0901
4 x 4 (100x100)	30 (750)	Galvanised	8	260 1001

BEST SELLER

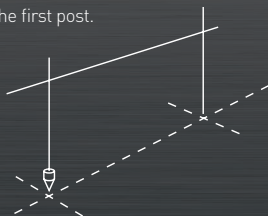
BEST SELLER

#### HOLD FAST™ DRIVE IN POST SUPPORT

POST SIZE ins (mm)	LENGTH	FINISH	QTY/BOX	CODE
3 x 3 (75x75)	24 (600)	Epoxy Brown	10	269 0753
4 x 4 (100x100)	30 (750)	Epoxy Brown	8	269 1003
3 x 3 (75x75)	24 (600)	Galvanised	10	269 0751
4 x 4 (100x100)	30 (750)	Galvanised	8	269 1001

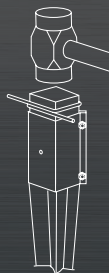
### How to Install Drive In Post Support Warning: check position of underground services before using Fencemate® spikes.

1. Establish line and height of fence with a builder's line and find the position of the first post.

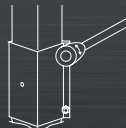


2. Using a drive tool and sledge hammer drive the spike into the ground, checking for line and level regularly. Adjust as necessary.

**TIP** in very hard or stoney ground use a crowbar to make a pilot hole first.



3. Fix Fencemate® panel clips to post and insert post into socket, clamp by tightening bolts using a 13mm socket or spanner. Erect panel and fix to panel clips with galvanized nails. Repeat steps 2-3.

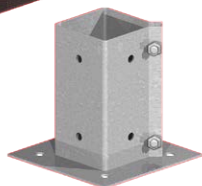
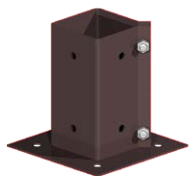


## Post Support Systems

### SWIFT CLAMP™ AND HOLD FAST™ BOLT DOWN POST SUPPORT

These supports are designed for fixing posts to any hard surface that will accept fixings such as concrete bases, timber decking or walls. Robust construction and the effective clamp system ensure posts are securely supported. Available with flush sides (see below) for fixing directly next to a vertical surface.

Suitable for fencing, decking, car ports and fixing to walls. Domestic and light commercial use only.



**BEST SELLER**

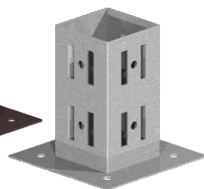
#### SWIFT CLAMP™ BOLT DOWN POST SUPPORT

POST SIZE ins (mm)	FINISH	QTY/BOX	CODE
2 x 2 (50 x 50)	Epoxy Brown	10	262 0503
2 ¼ x 2 ¼ (70x70)	Epoxy Brown	10	262 0703
3 x 3 (75 x 75)	Epoxy Brown	10	262 0753
3 ½ x 3 ½ (90x90)	Epoxy Brown	10	262 0903
4 x 4 (100 x100)	Epoxy Brown	10	262 1003
6 x 6 (150x150)	Epoxy Brown	6	262 1503
2 x 2 (50 x 50)	Galvanised	10	262 0501
2 ¼ x 2 ¼ (70x70)	Galvanised	10	262 0701
3 x 3 (75x75)	Galvanised	10	262 0751
3 ½ x 3 ½ (90x90)	Galvanised	10	262 0901
4 x 4 (100x100)	Galvanised	10	262 1001
6 x 6 (150x150)	Galvanised	6	262 1501



#### SWIFT CLAMP™ FLUSH BOLT DOWN POST SUPPORTS

POST SIZE ins (mm)	FINISH	QTY/BOX	CODE
3 x 3 (75x75)	Epoxy Brown	10	264 0753
4 x 4 (100x100)	Epoxy Brown	10	264 1003
3 x 3 (75x75)	Galvanised	10	264 0751
4 x 4 (100x100)	Galvanised	10	264 1001

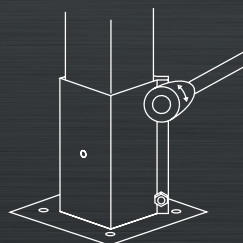
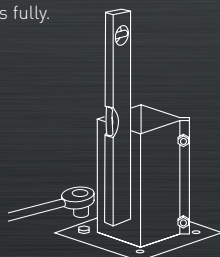
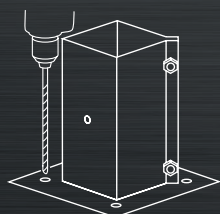


#### HOLD FAST™ BOLT DOWN POST SUPPORT

POST SIZE ins (mm)	FINISH	QTY/BOX	CODE
3 x 3 (75x75)	Epoxy Brown	10	271 0753
4 x 4 (100x100)	Epoxy Brown	10	271 1003
3 x 3 (75x75)	Galvanised	10	271 0751
4 x 4 (100x100)	Galvanised	10	271 1001

## How to Install Bolt Down Post Support

1. Place the support in the desired position. Drill through the holes in the base (size to suit fixings - ask your stockist for advice).
2. Insert fixings into holes and tighten, check support is vertical and pack under base as necessary. Tighten bolts fully.
3. Insert post into socket and tighten clamping bolts securely using a 13mm socket or spanner.

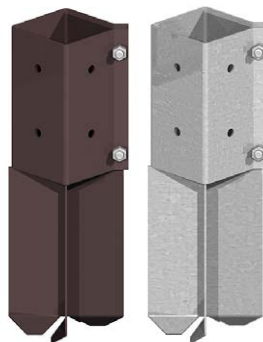




## SWIFT CLAMP™ CONCRETE IN POST SUPPORT

This support is designed for use where conditions prevent the use of the drive in post support such as very stoney or loose ground or areas of hardstanding. The effective clamp system will hold the post securely in the socket. Suitable for fencing, decking and carports.

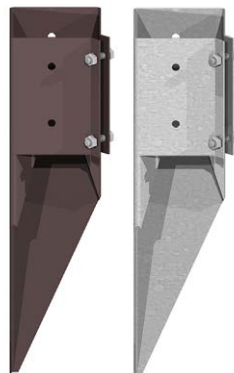
POST SIZE ins (mm)	FINISH	QTY/BOX	CODE
3 x 3 (75x75)	Epoxy Brown	10	263 0753
4 x 4 (100x100)	Epoxy Brown	10	263 1003
3 x 3 (75x75)	Galvanised	10	263 0751
4 x 4 (100x100)	Galvanised	10	263 1001



## SWIFT CLAMP™ REPAIR SPUR

This support makes light work of replacing a rotten timber post in a sound concrete base. The repair spur drives between the old timber and the concrete base to provide a secure post support without the need to disturb the concrete base. The effective clamp system ensures posts are securely held in the socket.

POST SIZE ins (mm)	FINISH	QTY/BOX	CODE
3 x 3 (75x75)	Epoxy Brown	10	261 0753
4 x 4 (100x100)	Epoxy Brown	10	261 1003
3 x 3 (75x75)	Galvanised	10	261 0751
4 x 4 (100x100)	Galvanised	10	261 1001

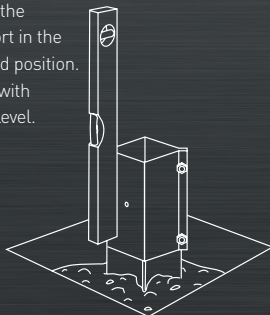


## How to Install Concrete In Post Support

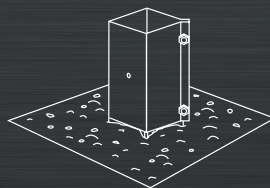
1. Excavate hole at least 400mm square by 500mm deep and partially fill with dry mix concrete.



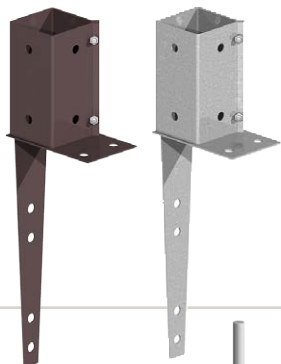
2. Place the Support in the desired position. Level with spirit level.



3. Fill hole with concrete up to the base of the socket. Allow 24 hours for concrete to set before inserting the post.



## Post Support Systems



### SWIFT CLAMP™ WALL MOUNT POST SUPPORT

This support is specifically designed for securing posts to the top of concrete or brick walls. The effective clamp system will hold the post securely in the socket.

Suitable for trellis or fencing up to 1.2m high.

Note: check structural condition before fixing commences.

POST SIZE ins (mm)	FINISH	QTY/BOX	CODE
3 x 3 (75x75)	Epoxy Brown	10	268 0753
3 x 3 (75x75)	Galvanised	10	268 0751



### GROUND SOCKET TO CONCRETE IN

These robust ground sockets are ideal for supporting timber posts for decking or carports etc and hold the timber above ground level. Virtually out of sight, they avoid post decay in the long term.

POST SIZE ins (mm)	FINISH	QTY/BOX	CODE
4 - 6 (100-150)	Galvanised	10	273 0001



### FENCE PIN

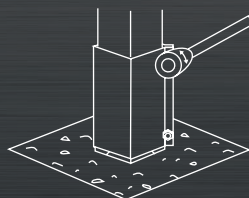
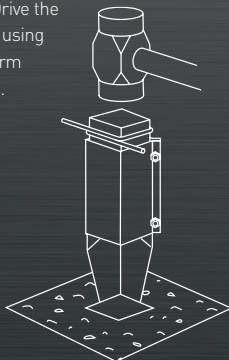
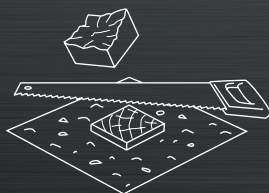
These sturdy pins are ideal for supporting path edging or border roll. They drive effectively into most ground conditions.

Suitable for path edging, log roll, and fence base boards.

POST SIZE ins (mm)	FINISH	QTY/BOX	CODE
18 (450)	P-Galvanised	10	266 4507

## How to Install Repair Spur

1. Cut off broken post as near to the base as possible.
2. Place the point of the repair spur between the timber and the concrete base. Drive the spur in using short firm strokes.
3. Insert the new post in socket and clamp securely using 13mm socket or spanner.

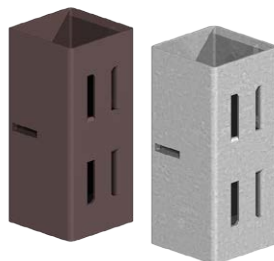




## HOLDFAST POST EXTENDER

These effective extension sockets make light work of extending timber posts. Sturdy and simple to install, they will extend 3" or 4" posts up to 1.2m.

POST SIZE ins (mm)	FINISH	QTY/BOX	CODE
3 x 3 (75x75)	Epoxy Brown	10	267 0753
4 x 4 (100x100)	Epoxy Brown	10	267 1003
3 x 3 (75x75)	Galvanised	10	267 0751
4 x 4 (100x100)	Galvanised	10	267 1001



## POST EXTENDER - SET OF 4

These simple cost-effective angle brackets allow any size of post to be extended up to 1m (3') maximum. It is recommended that four are used on each post.

Suitable for extending posts for trellis and decorative panels.

LENGTH ins (mm)	FINISH	SETS/BOX	CODE
8 (200)	P-Galvanised	10	267 2007



## DRIVE IN TOOL

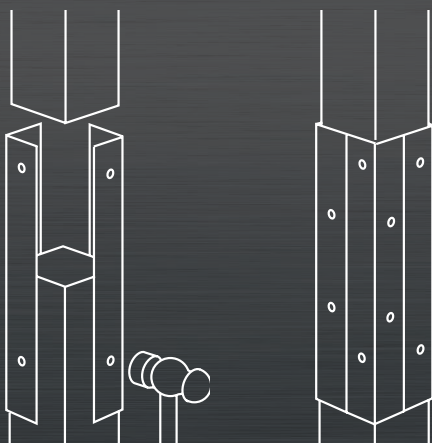
This useful tool helps ensure Fencemate® Drive in Post Supports are installed safely and without damage.

SIZE ins (mm)	QTY/BOX	CODE
4 x 4 (75x75)	10	265 0753
4 (100x100)	10	265 1003

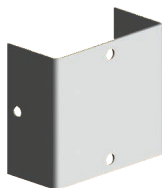


## How to Install Post Extender

1. Cut extension to the correct length and fix angle brackets with two galvanized nails.
2. Locate extension post with bracket onto existing post and fix with two galvanized nails.

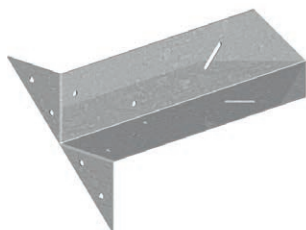


## Metal Brackets



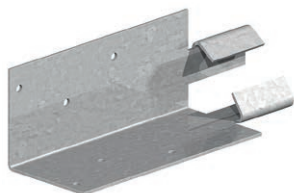
### PANEL FIXING CLIPS

SIZE mm	FINISH	QTY/BOX	CODE
35x35	Pre-Galvanised	100	230 0357
45x50	Pre-Galvanised	100	230 0457
50x50	Pre-Galvanised	100	230 0507



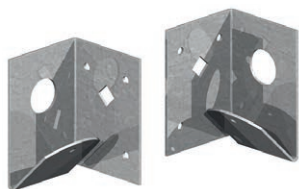
### ARRIS RAIL REPAIR BRACKET

SIZE	FINISH	QTY/BOX	CODE
For 3" arris rail	Pre-Galvanised	50	226 0757
For 3" arris rail	Epoxy Brown	50	226 0759



### ARRIS RAIL MORTICE BRACKET

SIZE	FINISH	QTY/BOX	CODE
For 3" arris rail	Pre-Galvanised	50	227 0757



### BOLT-ON ARRIS RAIL BRACKETS HANDED

SIZE	FINISH	QTY/BOX	CODE
For 3" arris rail	Pre-Galvanised	25	228 0757



### TRELLIS CLIP

SIZE ins (mm)	FINISH	QTY/BOX	CODE
2½ (60)	Galvanised	100	230 1607

Designed for securing trellises to fence posts.





## GRAVEL BOARD BRACKETS

SIZE ins (mm)	FINISH	QTY/BOX	CODE
6x1 (150x25)	Galvanised	100	230 1507
8x1 (200x25)	Galvanised	50	230 2257
6x2 (150x50)	Galvanised	50	230 3507
9x2 (230x50)	Galvanised	25	230 4507

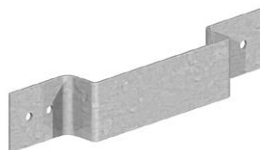
For fixing gravel boards to wooden fence posts.  
1" designed for wooden gravel boards and 2" for concrete.



## PANEL SECURITY BRACKET

SIZE	FINISH	QTY/BOX	CODE
To suit 4" post	Pre-Galvanised	50	230 1007

For securing wooden fence panels together to stop them being removed from concrete posts.



## ANTI RATTLE PANEL CLAMP FOR CONCRETE POSTS

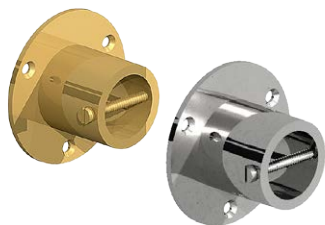
SIZE	QTY/BOX	CODE
Oak	100	750 0000

Used to prevent fence panels rattling during windy weather.



HAVE YOU SEEN  
**MODULAR  
STEEL RAILING  
SYSTEM?**  
Go to page 22

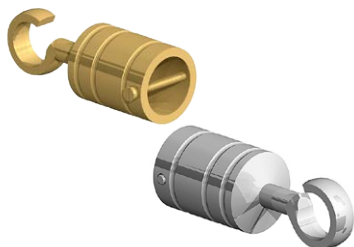
## Decorative Rope and Fittings



### ROPE END

SIZE	FINISH	QTY/BOX	CODE
24mm rope	Brass	10	351 0245
24mm rope	Chrome	10	351 024C
28mm rope	Brass	10	351 0285
28mm rope	Chrome	10	351 028C

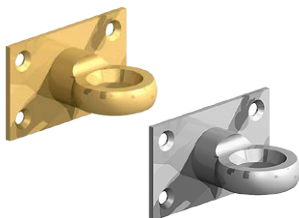
Complete with fixings.



### ROPE HOOK

SIZE	FINISH	QTY/BOX	CODE
24mm rope	Brass	10	353 0245
4mm rope	Chrome	10	353 024C
8mm rope	Brass	10	353 0285
8mm rope	Chrome	10	353 028C

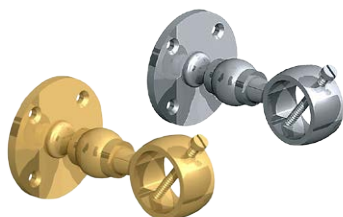
complete with fixings.



### ROPE EYE ON PLATE

SIZE	FINISH	QTY/BOX	CODE
24 and 28mm rope	Brass	10	355 0005
24 and 28mm rope	Chrome	10	355 000C

Complete with fixings.



### HANDRAIL BRACKET FOR ROPE

SIZE	FINISH	QTY/BOX	CODE
24 and 28mm rope	Brass	10	359 0245
24 and 28mm rope	Chrome	10	359 024C

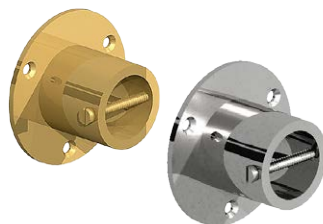
Complete with fixings.

**DID YOU KNOW?**  
ALL OUR CHROME  
ROPE FITTINGS ARE  
SOLID BRASS WITH  
CHROME PLATING

## ROPE END (PACK OF 2)

SIZE	FINISH	QTY/BOX	CODE
24mm rope	Brass	5	850 0245
24mm rope	Chrome	5	850 024C
28mm rope	Brass	5	850 0285
28mm rope	Chrome	5	850 028C

Complete with fixings.



## HOOK AND EYE ON PLATE SET

SIZE	FINISH	QTY/BOX	CODE
24mm rope	Brass	5	857 0245
24mm rope	Chrome	5	857 024C
28mm rope	Brass	5	857 0285
28mm rope	Chrome	5	857 028C

Complete with fixings.



## HANDRAIL BRACKET (PACK OF 2)

SIZE	FINISH	QTY/BOX	CODE
24 and 28mm rope	Brass	5	858 0245
24 and 28mm rope	Chrome	5	858 024C

Complete with fixings.



## ROPE POST ROUND TOP

SIZE	DESCRIPTION	QTY/BOX	CODE
1400x75x75mm	Drilled	1	370 980G
1400x75x75mm	No hole	1	371 980G



Drilled post illustrated

## Decorative Rope and Fittings



**Please note:** Manila rope will naturally shrink when wet. When hanging rope between posts, we recommend you allow an extra 10% length to compensate for this.

When drilling holes in posts for rope, allow 5mm more than diameter of rope.

### 3 STRAND MANILA ROPE 220M COIL

SIZE	LENGTH PER COIL	CODE
6mm	220m	320 0060
8mm	220m	320 0080
10mm	220m	320 0100
12mm	220m	320 0120
14mm	220m	320 0140
16mm	220m	320 0160
18mm	220m	320 0180
20mm	220m	320 0200
24mm	220m	320 0240
28mm	220m	320 0280
32mm	220m	320 0320
40mm	220m	320 0400



### 3 STRAND MANILA ROPE 100M COIL

SIZE	LENGTH PER COIL	CODE
24mm	100m	321 0240
28mm	100m	321 0280
36mm	100m	321 0360
40mm	100m	321 0400



### 3 STRAND MANILA ROPE 50M COIL

SIZE	LENGTH PER COIL	CODE
32mm	50m	323 0320
40mm	50m	323 0400



### 3 STRAND MANILA ROPE 35M SPOOL

SIZE	LENGTH PER SPOOL	CODE
16mm	35m	323 0160
18mm	35m	323 0180
20mm	35m	323 0200
24mm	35m	323 0240
28mm	35m	323 0280

NEW



### PRE-COILED 3 STRAND MANILA ROPE

SIZE	LENGTH PER COIL	CODE
24mm	6m	860 0240
28mm	6m	860 0280
24mm	8m	861 0240
28mm	8m	861 0280
24mm	12m	862 0240
28mm	12m	862 0280

NEW





### 3 STRAND POLYHEMP ROPE 220M COIL

SIZE	LENGTH PER COIL	CODE
18mm	220m	323 0160
24mm	220m	323 0180
28mm	220m	323 0200
32mm	220m	323 0240



### 3 STRAND POLYHEMP ROPE 100M COIL

SIZE	LENGTH PER COIL	CODE
24mm	100m	328 0240
28mm	100m	328 0280



### 3 STRAND POLYHEMP ROPE 35M COIL

SIZE	LENGTH PER SPOOL	CODE
16mm	35m	323 0160
18mm	35m	323 0180
20mm	35m	323 0200
24mm	35m	323 0240
28mm	35m	323 0280



### 3 STRAND POLYHEMP ROPE 35M SPOOL

SIZE	LENGTH PER SPOOL	CODE
18mm	35m	3290180
24mm	35m	3290240
28mm	35m	3290280
32mm	35m	3290320



NEW

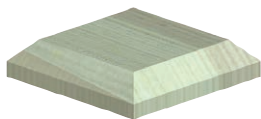
### PRE-COILED 3 STRAND POLYHEMP ROPE

SIZE	LENGTH PER COIL	CODE
24mm	6m	863 0240
24mm	8m	864 0240
24mm	12m	865 0240
28mm	6m	863 0280
28mm	8m	864 0280
28mm	12m	865 0280



NEW

## Post Caps and Finials



**BEST SELLER**



### POST CAPS

TYPE ins (mm)	SIZE mm	FINISH	QTY/BOX	CODE
3x3 [75x75]	96x96x23	Untreated	50	728 0750
4x4 [100x100]	120x120x26	Untreated	50	729 1000
4x3 [100x75]	96x120x23	Untreated	50	730 1000
3x3 [75x75]	96x96x23	Green Treated	50	728 075G
4x4 [100x100]	120x120x26	Green Treated	50	729 100G
4x3 [100x75]	96x120x23	Green Treated	50	730 100G
3x3 [75x75]	96x96x23	Brown Treated	50	728 075B
4x4 [100x100]	120x120x26	Brown Treated	50	729 100B
4x3 [100x75]	96x120x23	Brown Treated	50	730 100B

Made from premium quality slow grown European timber, pressure treated to UC4.

Please note: 'To suit post' size indicates size of compatible post; actual product is slightly larger - please take care when ordering.

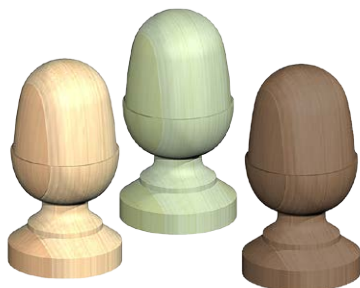


### POST TEMPLS

TYPE ins (mm)	SIZE mm	FINISH	QTY/BOX	CODE
3x3 [75x75]	100x100x45	Untreated	50	731 0750
4x4 [100x100]	126x126x50	Untreated	50	731 1000
3x3 [75x75]	100x100x45	Green Treated	50	731 075G
4x4 [100x100]	126x126x50	Green Treated	50	731 100G

Made from premium quality slow grown European timber, pressure treated to UC4.

Please note: 'To suit post' size indicates size of compatible post; actual product is slightly larger - please take care when ordering.



### POST ACORN FINIAL

SIZE ins (mm)	FINISH	QTY/BOX	CODE
3x3 [75x75]	Untreated	50	722 0750
4x4 [100x100]	Untreated	50	722 1000
3x3 [75x75]	Green Treated	50	722 075G
4x4 [100x100]	Green Treated	50	722 100G
3x3 [75x75]	Brown Treated	50	722 075B
4x4 [100x100]	Brown Treated	50	722 100B

Made from premium quality slow grown European timber, pressure treated to UC4.

Complete with double ended screws.

Please note: 'To suit post' size indicates size of compatible post; actual product is slightly smaller - please take care when ordering

## POST BALL & COLLAR FINIAL

SIZE ins (mm)	FINISH	QTY/BOX	CODE
2x2 [50x50]	Untreated	50	720 0500
3x3 [75x75]	Untreated	50	720 0750
4x4 [100x100]	Untreated	50	720 1000
6x6 [150x150]	Untreated	1	720 1500
2x2 [50x50]	Green Treated	50	720 050G
3x3 [75x75]	Green Treated	50	720 075G
4x4 [100x100]	Green Treated	50	720 100G
6x6 [150x150]	Green Treated	1	720 150G
3x3 [75x75]	Brown Treated	50	720 075B
4x4 [100x100]	Brown Treated	50	720 100B

Made from premium quality slow grown European timber, pressure treated to UC4.

Complete with double ended screws.

Please note: 'To suit post' size indicates size of compatible post; actual product is slightly smaller - please take care when ordering

**BEST SELLER**



## POST BISHOPS FINIAL

SIZE ins (mm)	FINISH	QTY/BOX	CODE
3x3 [75x75]	Untreated	50	724 0750
3x3 [75x75]	Green Treated	50	724 075G

Made from premium quality slow grown European timber, pressure treated to UC4.

Complete with double ended screws.

Please note: 'To suit post' size indicates size of compatible post; actual product is slightly smaller - please take care when ordering



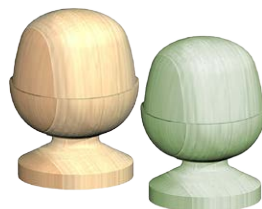
## POST MIDACORN FINIAL

SIZE ins (mm)	FINISH	QTY/BOX	CODE
4x4 [100x100]	Untreated	50	726 1000
4x4 [100x100]	Green Treated	50	726 100G

Made from premium quality slow grown European timber, pressure treated to UC4.

Complete with double ended screws.

Please note: 'To suit post' size indicates size of compatible post; actual product is slightly smaller - please take care when ordering



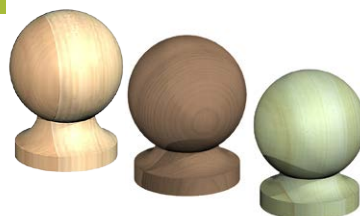
## POST MIDBALL FINIAL

SIZE ins (mm)	FINISH	QTY/BOX	CODE
4x4 [100x100]	Untreated	50	725 1000
4x4 [100x100]	Green Treated	50	725 100G
4x4 [100x100]	Brown Treated	50	725 100B

Made from premium quality slow grown European timber, pressure treated to UC4.

Complete with double ended screws.

Please note: 'To suit post' size indicates size of compatible post; actual product is slightly smaller - please take care when ordering



## Post Caps and Finials



### DOUBLE ENDED WOOD SCREWS

SIZE ins (mm)	FINISH	QTY/BOX	CODE
2 [50]	BZP	50	431 0000

To secure finials to finial bases

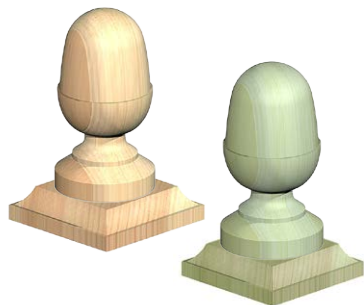


### FINIAL BASE

SIZE ins (mm)	FINISH	QTY/BOX	CODE
2x2 [50x50]	Untreated	50	727 0500
3x3 [75x75]	Untreated	50	727 0750
4x4 [100x100]	Untreated	50	727 1000
6x6 [150x150]	Untreated	50	727 1500
2x2 [50x50]	Green Treated	50	727 050G
3x3 [75x75]	Green Treated	50	727 075G
4x4 [100x100]	Green Treated	50	727 100G
5x5 [125x125]	Green Treated	50	727 125G
6x6 [150x150]	Green Treated	50	727 150G
2x2 [50x50]	Brown Treated	50	727 050B
3x3 [75x75]	Brown Treated	50	727 075B
4x4 [100x100]	Brown Treated	50	727 100B
5x5 [125x125]	Brown Treated	50	727 125B

Made from premium quality slow grown European timber, pressure treated to UC4.

Please note: 'To suit post' size indicates size of compatible post; actual product is slightly larger - please take care when ordering.



### ACORN FINIALS AND BASES (PACK OF 2)

SIZE ins (mm)	FINISH	QTY/BOX	CODE
3x3 [75x75]	Untreated	5	823 0750
4x4 [100x100]	Untreated	5	823 1000
3x3 [75x75]	Green Treated	5	823 075G
4x4 [100x100]	Green Treated	5	823 100G

Pre-packed with two finials, two bases, two double ended screws and four nails.

Made from premium quality slow grown European timber, pressure treated to UC4.

Please note: 'To suit post' size indicates size of compatible post; actual product is slightly larger - please take care when ordering.





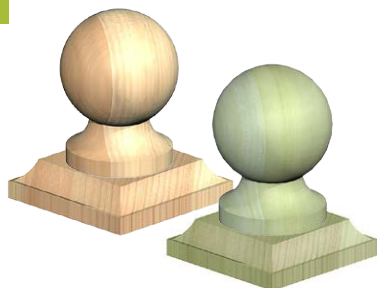
## BALL & COLLAR FINIALS AND BASES (PACK OF 2)

SIZE ins (mm)	FINISH	QTY/BOX	CODE
3x3 (75x75)	Untreated	5	821 0750
4x4 (100x100)	Untreated	5	821 1000
3x3 (75x75)	Green Treated	5	821 075G
4x4 (100x100)	Green Treated	5	821 100G

Pre-packed with two finials, two bases, two double ended screws and four nails.

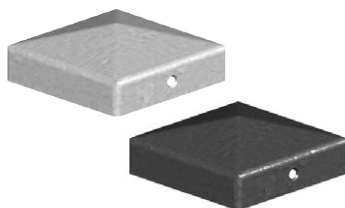
Made from premium quality slow grown European timber, pressure treated to UC4.

Please note: 'To suit post' size indicates size of compatible post; actual product is slightly larger - please take care when ordering.



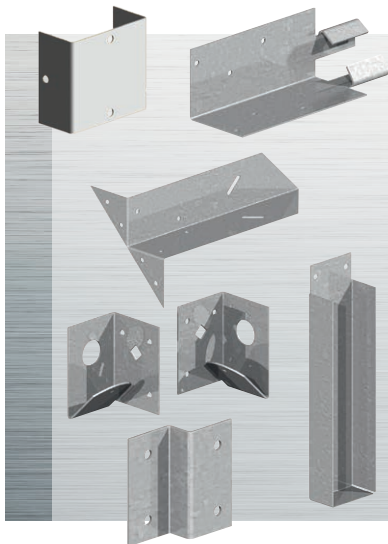
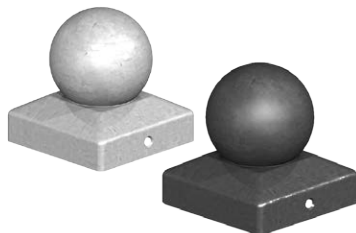
## FENCEMATE METAL POST CAP

SIZE ins (mm)	FINISH	QTY/BOX	CODE
3x3 (75x75)	Galvanised	25	728 0751
4x4 (100x100)	Galvanised	25	729 1001
3x3 (75x75)	Epoxy Black	25	728 0753
4x4 (100x100)	Epoxy Black	25	729 1003



## METAL BALL FINIAL

SIZE ins (mm)	FINISH	QTY/BOX	CODE
3x3 (75x75)	Galvanised	12	720 0751
4x4 (100x100)	Galvanised	12	720 1001
3x3 (75x75)	Epoxy Black	12	720 0753
4x4 (100x100)	Epoxy Black	12	720 1003



**HAVE YOU SEEN?**  
OUR RANGE OF  
METAL BRACKETS  
See page 12

Modular Steel Railing System



Steel modular railing panels for decking and balconies

Our steel modular railing panel is a pre-welded and enhanced version of traditional steel railing that brings unparalleled quality to any patio, deck or balcony. It provides a clean, classic appearance that is versatile for a variety of applications and surfaces. Pre-galvanized steel, zinc phosphate, DuPont® e-coat and DuPont® premium powder coating make it the most elegant and durable steel railing system on the market.

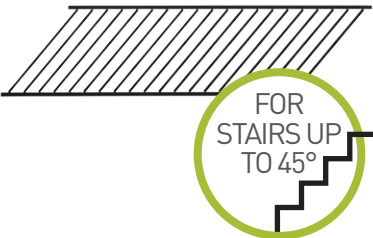
- 6' & 8' pre-welded sections (1" rail, 5/8" pickets)
- Unique adjustable railing panel that suits any steps or stairway
- Pre-galvanized, zinc phosphate, DuPont® e-coat and DuPont® powder coated steel
- Strongest and most attractive steel railing system on the market
- Peace of mind with a 15 year manufacturer warranty!
- Our steel modular railing panel is virtually maintenance free, which translates into more time enjoying your railing and less time maintaining it! With the ability to resist effects of weathering, our modular steel railing is coated with a specialized mixture that encompasses a premium powder coating loaded with UV inhibitors and a heavy zinc galvanisation treatment.
- The modular design allows an installer to complete the project without prior visits to site, saving days and wasted journeys



WELDED STEEL MODULAR RAILING PANEL

SIZE ins (mm)	FINISH	QTY/BOX	CODE
1820x1020	Black	1	825 1823
2440x1020	Black	1	825 2443
2440X863	Black	1	824 2443
2440X700	Black	1	823 2443

Includes all fixings



ADJUSTABLE STEEL MODULAR RAILING PANEL

SIZE ins (mm)	FINISH	QTY/BOX	CODE
2440x1020	Black	1	826 2443

Includes all fixings



## ACCENT PANEL RAIL

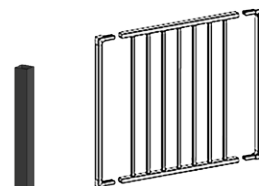
SIZE mm	FINISH	QTY/BOX	CODE
2440x125	Black	1	828 2443



## COMPLETE KIT FOR MAKING GATES

SIZE mm	FINISH	QTY/BOX	CODE
1000	Black	1	829 0093

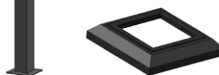
Includes all fixings. Modular railing panel not included.



## METAL POST WITH MOUNTING KIT

SIZE mm	FINISH	QTY/BOX	CODE
1140x75	Black	1	824 1253

Includes all fixings.



## FLAT PYRAMID POST CAP FOR RAILING POST

SIZE ins (mm)	FINISH	QTY/BOX	CODE
3x3 (75x75)	Black	1	826 1253



NEW

## FIXING BRACKET FOR WELDED RAILING PANEL (PACK OF 4)

SIZE ins (mm)	FINISH	QTY/BOX	CODE
1 (25)	Black	1	829 0033
1¼ (30)	Black	1	829 0063

4 brackets required per panel. Includes all fixings.  
Designed for use with welded railing panel. Can be used on any modular railing panel in conjunction with angle bracket below.



FOR USE  
WITH WELDED  
RAILING  
see page 22

## ANGLE BRACKET FOR ADJUSTABLE RAILING (PACK OF 4)

SIZE ins (mm)	FINISH	QTY/BOX	CODE
1 (25)	Black	1	829 0043
1¼ (30)	Black	1	829 0073

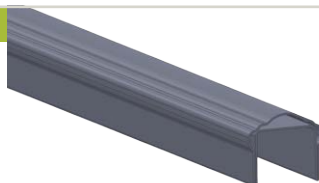
4 brackets required per panel. Includes all fixings.  
Designed for use with adjustable railing panel. Can be used on any modular railing panel in conjunction with straight fixing bracket above.



FOR USE  
WITH  
ADJUSTABLE  
RAILING  
see page 22

## ACCENT TOP HAND RAIL METAL

SIZE mm	FINISH	QTY/BOX	CODE
2440	Black	1	830 2443



P30



Angle Plate Bracket

P30



Balustrade Bracket

P27



Deck Baroque Spindles

P31



Joist Tie

P31



Anchor Bolt  
Down Plate

P31



Post Anchor  
Concrete-In

# Decking



P30



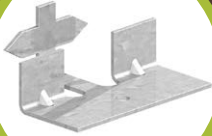
Mini Joist Hanger

P30



Multi-Truss Hangers

P31



Decking Clip

P31



Stair Tread Kit

P29



Aluminium  
Anti-Slip Plates

P31



Deck Post Connector

## Decking Accessories



### WOODEN POST

SIZE mm	FINISH	QTY/BOX	CODE
1500x100x100	Green Treated	4	824 125G
1400x100x100	Green Treated	4	824 140G

**Made from premium quality slow grown European timber, pressure treated to UC4.**

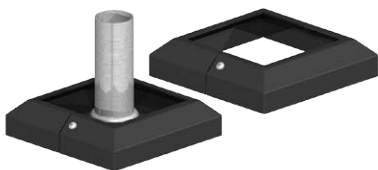


**BEST SELLER**

### BASE PLATE FOR WOODEN POST

SIZE ins (mm)	QTY/BOX	CODE
To suit 3"-3¾" (75-90mm) post	10	829 0053

**Includes all fixings. Use with compatible metal cover below.**



### METAL COVER FOR BASE PLATE

SIZE ins (mm)	QTY/BOX	CODE
To suit 3" (75mm) post	10	829 7603
To suit 3¼" (80mm) post	10	829 8003
To suit 3¾" (90mm) post	10	829 9603



### CLASSIC SPINDLES

SIZE mm	FINISH	QTY/BOX	CODE
660	Black	10	820 0010
800	Black	10	820 0020

**10 spindles cover 1.2m**





## SPINDLE CONNECTORS (PACK OF 20)

DESCRIPTION	FINISH	CODE
Straight	Black	820 0030
For stairs	Black	820 0040

For use with Fencemate Classic Spindles.

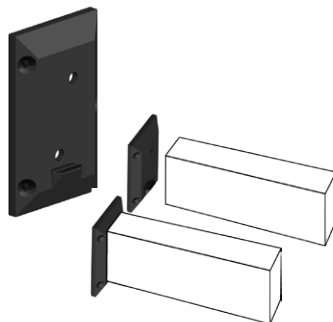
2 connectors required per spindle; 1 pack covers 1.2m.



## RAILING CONNECTORS (PACK OF 2)

SIZE mm	FINISH	CODE
40x75	Black plastic	819 0000

A smart and easy solution for fixing top and bottom rails to newel posts. Includes all fixings.



## ARC SPINDLES

SIZE mm	FINISH	QTY/BOX	CODE
800	Black	5	820 0080

10 spindles cover 1.2m



## BAROQUE SPINDLES

SIZE mm	FINISH	QTY/BOX	CODE
800	Black	5	820 0070

10 spindles cover 1.2m

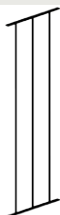


## Decking Accessories



### LINEAR METAL DECK PANELS

SIZE mm	FINISH	QTY/BOX	CODE
770x280	Polyester black on galvanised	4	810 0003



Size = height x width. Total span of 4 panels = 1120mm.

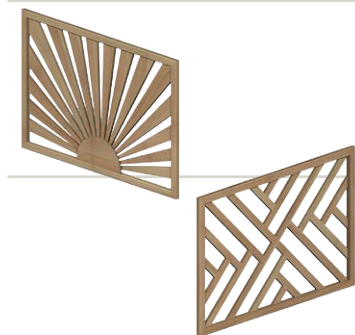


### FENCEMATE WAVE METAL DECK PANELS

SIZE mm	FINISH	QTY/BOX	CODE
770x280	Polyester black on galvanised	4	811 0003



Size = height x width. Total span of 4 panels = 1120mm.



### BURST OF SUNSHINE DECK PANEL

SIZE mm	FINISH	
1130x760	Green Treated	755 000G

Made from premium quality slow grown European timber, pressure treated to UC4.

### CONTEMPORARY DECK PANEL

SIZE mm	FINISH	CODE
1130x760	Green Treated	755 001G

Made from premium quality slow grown European timber, pressure treated to UC4.

### DECKING SPINDLES

SPINDLE	SIZE mm	FINISH	QTY/BOX	CODE
Square (A)	895x40x40	Green Treated	1	756 000G
Ornate (B)	895x40x40	Green Treated	1	756 001G
Modern (C)	895x40x40	Green Treated	1	756 002G
Stop Chamfered (D)	895x40x40	Green Treated	1	756 003G
Stop Chamfered Fluted (E)	895x40x40	Green Treated	1	756 004G

NEW

Made from premium quality slow grown European timber, pressure treated to UC4.



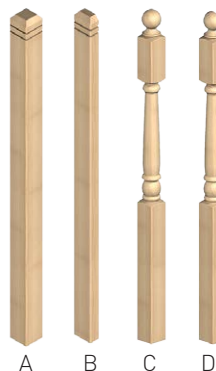




## POSTS FOR DECKING

SPINDLE	SIZE mm	FINISH	QTY/BOX	CODE
Square Newel (A)	1300x80x80	Green Treated	4	757 000G
Square Half Newel (B)	1300x80x40	Green Treated	2	757 001G
Ornate Newel (C)	1300x80x80	Green Treated	4	757 002G
Ornate Half Newel (D)	1300x80x40	Green Treated	2	757 003G

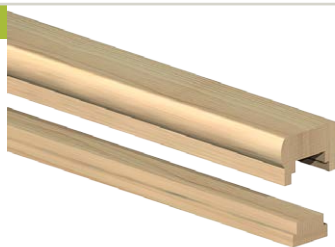
Made from premium quality slow grown European timber, pressure treated to UC4.



## HAND RAIL FOR DECKING

SIZE mm	FINISH	QTY/BOX	CODE
1800	Green Treated	4	758 000G
2400	Green Treated	4	758 002G

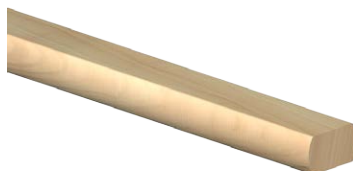
Made from premium quality slow grown European timber, pressure treated to UC4.



## BASE RAIL FOR DECKING

SIZE mm	FINISH	QTY/BOX	CODE
1800	Green Treated	4	758 001G
2400	Green Treated	4	758 003G

Made from premium quality slow grown European timber, pressure treated to UC4.



## ALUMINIUM ANTI-SLIP PLATE

SIZE mm	FINISH	QTY/BOX	CODE
62.5x635	Aluminium/Black	10	380 6250
115x635	Aluminium/Black	10	380 1150
115x1000	Aluminium/Black	10	380 1159

- Includes stainless steel fixings
- Hard-wearing anti-slip coating
- Rust resistant
- Easy to install
- Ideal for walkways, decking and steps





## Decking Accessories



### ANGLE PLATE BRACKET

SIZE mm	FINISH	QTY/BOX	CODE
40x40x20	Galvanised	100	283 0207
50x50x30	Galvanised	100	283 0307



### BALUSTRADE BRACKET

SIZE mm	FINISH	QTY/BOX	CODE
40x40x30	Zinc Plated	100	230 0302

For fixing balustrading to decking posts.

Mini



Jiffy



Jiffy Long Leg



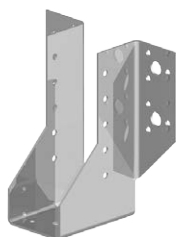
### JOIST HANGERS

SIZE mm	TYPE	FINISH	QTY/BOX	CODE
38	Mini	Pre-Galvanised	250	255 0387
44	Mini	Pre-Galvanised	250	255 0447
47	Mini	Pre-Galvanised	250	255 0477
50	Mini	Pre-Galvanised	100	255 0017
38	Jiffy	Pre-Galvanised	100	255 1387
44	Jiffy	Pre-Galvanised	100	255 1447
47	Jiffy	Pre-Galvanised	100	255 1477
50	Jiffy	Pre-Galvanised	100	255 0027
63	Jiffy	Pre-Galvanised	100	255 1637
75	Jiffy	Pre-Galvanised	100	255 0037
100	Jiffy	Pre-Galvanised	100	255 1007
38	Jiffy Long Leg	Pre-Galvanised	50	255 2387
44	Jiffy Long Leg	Pre-Galvanised	50	255 2447
47	Jiffy Long Leg	Pre-Galvanised	50	255 2477
50	Jiffy Long Leg	Pre-Galvanised	50	255 2507
63	Jiffy Long Leg	Pre-Galvanised	50	255 2637
75	Jiffy Long Leg	Pre-Galvanised	50	255 2757
100	Jiffy Long Leg	Pre-Galvanised	50	255 2007

Size = timber thickness.

### MULTI-TRUSS HANGERS

SIZE mm	FINISH	QTY/BOX	CODE
38x100-125	Pre-Galvanised	50	285 0381
44x100-125	Pre-Galvanised	50	285 0441
47x100-125	Pre-Galvanised	50	285 0471
50x100-125	Pre-Galvanised	50	285 1257
38x150-200	Pre-Galvanised	50	285 1381
44x150-200	Pre-Galvanised	50	285 1441
47x150-200	Pre-Galvanised	50	285 1471
50x150-200	Pre-Galvanised	50	285 2007
88x150	Pre-Galvanised	50	285 0881
100x200	Pre-Galvanised	25	285 1001





## DECKING CLIPS

FINISH	QTY/BOX	CODE
Galvanised	150	284 0001

Use for easy spacing and securing of decking.



## JOIST TIE

SIZE ins (mm)	FINISH	QTY/BOX	CODE
1½ [38]	Pre-Galvanised	100	290 0387
2 [50]	Pre-Galvanised	100	290 0507

For secure joining of two joists.



## STAIR TREAD BRACKET KIT

SIZE mm	FINISH	QTY/BOX	CODE
200x35x35	Pre-Galvanised	3	291 2007

Includes three left and three right brackets for easy construction of steps, eg for decking.



## ANCHOR BOLT DOWN PLATE

SIZE mm	FINISH	QTY/BOX	CODE
100x100	Galvanised	1	292 0951

For anchoring timber posts to the ground.  
Raised to prevent damp rot.



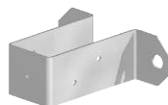
## POST ANCHOR CONCRETE IN

SIZE mm	FINISH	QTY/BOX	CODE
100x100	Galvanised	1	293 0951



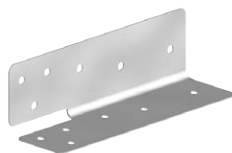
## DECK POST CONNECTOR

SIZE mm	FINISH	QTY/BOX	CODE
38x90	Pre-Galvanised	1	294 0387
90x90	Pre-Galvanised	1	294 0907



## UNIVERSAL FRAMING ANCHOR

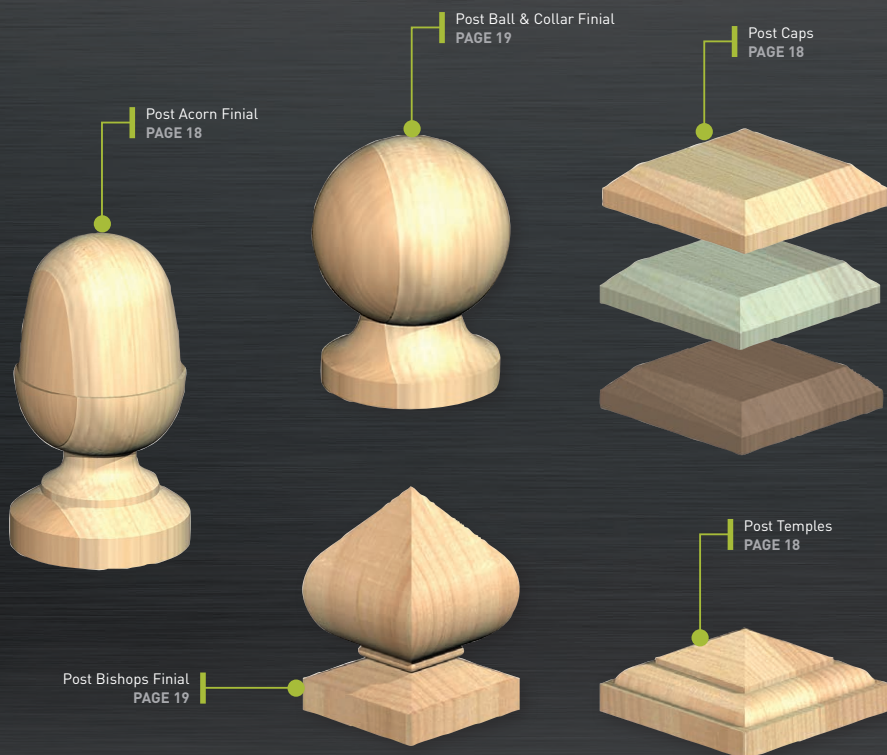
SIZE mm	FINISH	QTY/BOX	CODE
37x37x126	Pre-Galvanised	100	295 0377



# Want to know more about the full **Post Caps & Finials** range on pages 18-21?

Available in three finishes - untreated, green treated and brown treated

- Size range from 2" to 6" (50mm to 150mm)
- We offer post bases and double ended screws with the range
- High quality machine finished post caps and finials
- Made from slow grown Eastern European timber (not offcuts)



# Notes



# Index

## A

Acorn Finials .....	18, 20
Anchor Bolt Down Plate .....	31
Angle Bracket for Adjustable Railing .....	23
Angle Plate Bracket .....	30
Anti Rattle Panel Clamp for Concrete Posts .....	13
Anti-Slip Plate - Aluminium .....	29
Arc Spindles .....	27
Arris Rail Bracket .....	12

## B

Ball & Collar Finials .....	19
Ball Finials .....	19-21
Balustrade Bracket .....	30
Baroque Spindles .....	27
Base Plate for Wooden Post .....	26
Base Rail for Decking .....	29
Bishops Finial .....	19
Bolt Down Post Support .....	8
Bolt on Arris Rail Brackets .....	12
Burst of Sunshine Deck Panel .....	28

## C

Classic Spindles .....	26
Complete Kit for Making Gates .....	23
Concrete in Post Anchor .....	31
Concrete in Post Supports .....	9
Contemporary Deck Panel .....	28

## D

Deck Post Connector .....	31
Decking Clips .....	31
Decking Newel Posts .....	29
Decking Panel .....	28
Decking Spindles .....	26-29
Double Ended Wood Screws .....	20
Drive in Post Support .....	7
Drive in Tool .....	11

## F

Fence Pin .....	10
Finial Bases .....	20
Finials .....	18-21
Fixing Bracket for Welded Railing Panel .....	23
Flat Pyramid Post Cap for Railing Post .....	23
Flush Bolt Down Post Support .....	8
Framing Anchor .....	31

## G

Gravel Board Brackets .....	13
Ground Socket To Concrete in .....	10

## H

Hand Rail - Metal .....	23
Hand Rail for Decking .....	29
Handrail Bracket for Decorative Rope .....	14
Hold Fast Bolt Down Post Support .....	8
Hold Fast Drive in Post Support .....	7
Hook And Eye on Plate Set .....	15

## J

Joist Hangers .....	30
Joist Tie .....	31

## L

Linear Metal Deck Panels .....	28
--------------------------------	----

## M

Manila Rope .....	16
Metal Ball Finial .....	21
Metal Cover for Base Plate .....	26
Metal Post with Mounting Kit .....	23
Midacorn Finial .....	19
Midball Finial .....	19
Modular Railing Panel .....	22
Multi-Truss Hangers .....	30

## P

Panel Fixing Clips .....	12
Panel Rail .....	23

# Index

Panel Security Bracket .....	13
Polyhemp Rope .....	17
Post Anchor Concrete in .....	31
Post Ball & Collar Finial .....	19
Post Cap - Metal .....	21
Post Caps .....	18-21
Post Bases .....	20
Post Concrete Rapid Set .....	6
Post Extender .....	11
Post Supports .....	7-11
Post Temples .....	18
Posts for Decking .....	29
Pre-Coiled Manila Rope .....	16
Pre-Coiled Polyhemp Rope .....	17
Pyramid Post Caps .....	23

## R

Railing Connectors .....	27
Rapid Set Post Concrete .....	6
Rope End for Decorative Rope .....	14-15
Rope Eye on Plate .....	14-15
Rope Hook .....	14-15
Rope Post Round Top .....	15

## S

Spindle Connectors .....	27
Spindles .....	26-29
Stair Tread Bracket Kit .....	31
Steel Modular Railing Panel .....	22
Swift Clamp Bolt Down Post Support .....	8
Swift Clamp Concrete in Post Support .....	9
Swift Clamp Drive in Post Support .....	7
Swift Clamp Flush Bolt Down Post Support .....	8
Swift Clamp Repair Spur .....	9
Swift Clamp Wallmount Post Support .....	11

## T

Trellis Clip .....	12
--------------------	----

## U

Universal Framing Anchor .....	31
--------------------------------	----

## W

Wave Metal Deck Panels .....	28
Welded Steel Modular Railing Panel .....	22
Wooden Post .....	26



# FENCEMATE®

SUPERIOR FENCING ACCESSORIES

Authorised Distributor



Printed in the UK using vegetable based inks.  
Printed on FSC certified paper from well managed Forests using mix sources.